

# New quick couplings



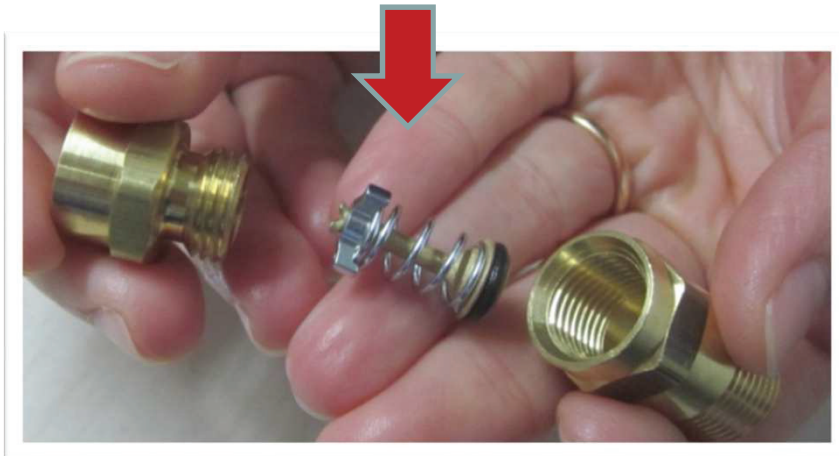
**Indel Webasto Marine**



- Indel Webasto Marine is continuously improving and extending its product portfolio.
- Following our quality policy, GE80, GE150 and Compact Classic cooling units, have been renewed with a new series of self-sealing «quick couplings».
- The new quick couplings can be re-opened without any gas leaking like the former versions. In addition to this, the valve assembly inside the coupling's body can easily be replaced without welding operations.
- Remember though that all interventions on the gas circuit must be effected by a technician authorized according to the new European regulation 517/2014 regarding the global warming.



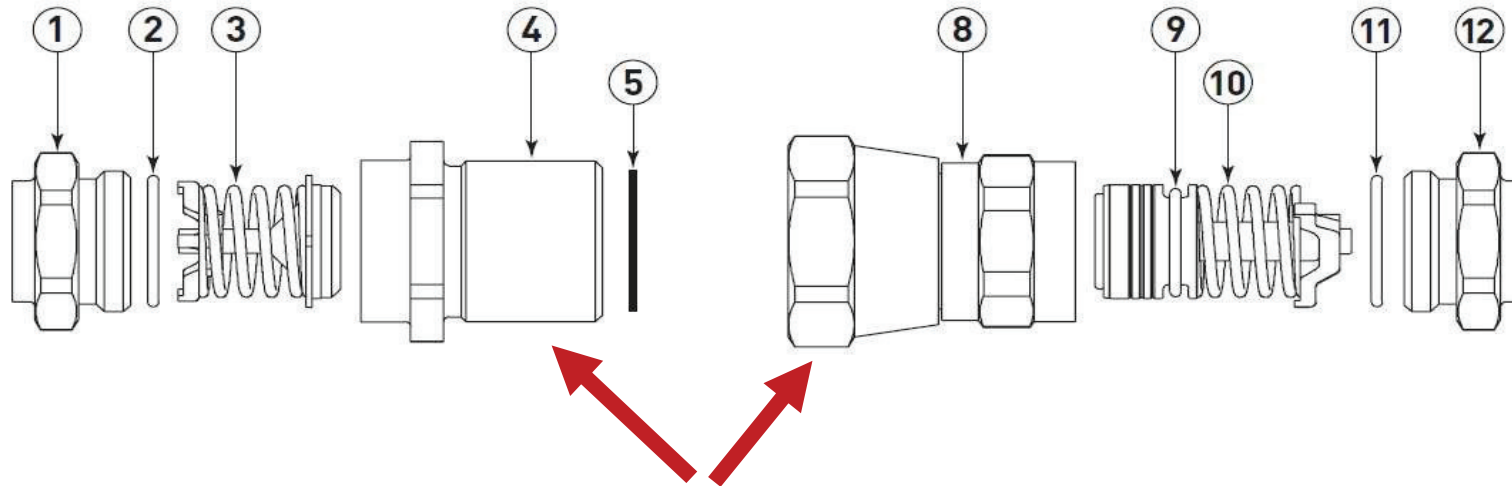
Poppet valve assembly



Valve and sleeve assembly



## Components



- 1 Tubing Adapter (Brass)
- 2 O-Ring
- 3 Poppet Valve Assembly
- 4 Body
- 5 Gasket Seal
- 8 Union Nut and Body Assembly
- 9 O-Ring
- 10 Valve and Sleeve Assembly
- 11 O-Ring
- 12 Tubing Adapter (Brass)

**Screw these two parts to connect the couplings, tightening force from 13,5 to 16 Nm**

**Unscrew components 1 from 4 and 8 from 12, only in case of valve replacement.  
Caution: unscrewing the above mentioned parts, all the gas will be lost.**

To connect the quick couplings, start by pulling forward the tubes on the compressor. Connect first the thin capillary tube.

**Rotate the female coupling nut only.**

The male coupling must be held stationary or the thin tube will be broken. Screw the couplings to the bottom of their threads, tighten finally firmly using fixed spanners 19 mm on the female and 16 mm on the male. Suggested tightening force range between 13,5 Nm and 16 Nm (max). Do not throw away the protection caps. Should it be required to re-position the unit, the couplings can be re-opened without the refrigerant escaping. In such a case, screw in the protection caps immediately and tighten firmly.

